

Appendix E:  
Open House Displays and Materials

# East-West Tie Transmission Project Open House



Please Sign-In

Name	Organization (if any)	Telephone	Mail or Email Address
PLEASE PRINT			
PLEASE PRINT			
PLEASE PRINT			
PLEASE PRINT			
PLEASE PRINT			
PLEASE PRINT			
PLEASE PRINT			
PLEASE PRINT			
PLEASE PRINT			
PLEASE PRINT			

Date: \_\_\_\_\_

Location: \_\_\_\_\_

# East-West Tie Transmission Project

## December 2013 Open Houses

### Project Terms of Reference

---

Thank-you for attending the Open House for this project. We are interested in hearing from you! Please take a few minutes to complete this comment form. Your input is requested by December 20, 2013.

What issues do you feel are important to consider for this project?

---

---

---

Do you feel that the consultation and engagement plan will provide you with sufficient opportunity to become informed about the project and to provide your input?

---

---

---

Did you find the information at this Open House helpful? Please circle – Yes or No

Do you have any additional questions or information for the project team?

---

---

---

---

---

---

---

---

---

---

Please submit your comments by December 20, 2013. Comments can be handed in at the Open House or sent to NextBridge by:

Email: [info@nextbridge.ca](mailto:info@nextbridge.ca)  
Fax: 416-364-2533  
Phone: 1-888-767-3006

We would like to collect your contact information for our records:

Name: \_\_\_\_\_

Address: \_\_\_\_\_

Phone: \_\_\_\_\_ Email: \_\_\_\_\_

All personal information included in a submission – such as name, address, telephone number and property location – is collected, maintained and disclosed by the Ministry of the Environment for the purpose of transparency and consultation. The information is collected under the authority of the *Environmental Assessment Act* or is collected and maintained for the purpose of creating a record that is available to the general public as described in s.37 of the *Freedom of Information and Protection of Privacy Act* (FIPPA). Personal information you submit will become part of a public record that is available to the general public unless you request that your personal information remain confidential. For more information, please contact the Ministry of the Environment's Freedom of Information and Privacy Coordinator at (416) 327-1434.



*Connecting Ontario's Northwest*

**THANK YOU**  
for attending this Open House  
*We want to hear from you*

[www.nextbridge.ca](http://www.nextbridge.ca)


## Purpose of the Open House

We are here to provide you with information about the following:

- Overview of the proposed project;
- Terms of Reference for the Environmental Assessment process; and
- NextBridge's commitment to engagement and consultation.

We are here to listen to your comments and questions about:

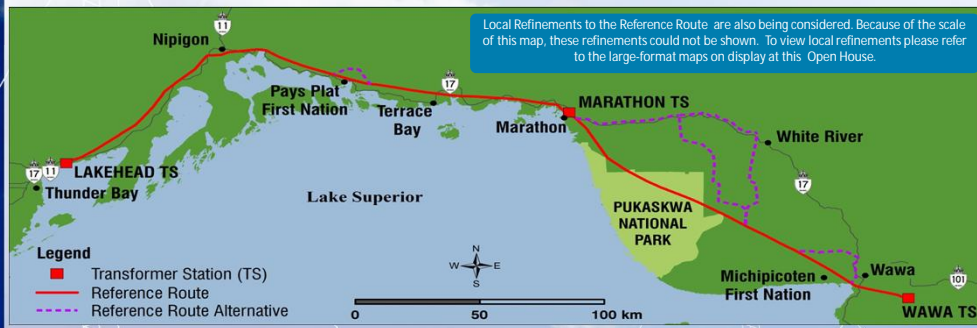
- The project, including the proposed reference route and routing alternatives;
- Studies and engagement activities proposed;
- What is important to you and should be considered; and
- Who else should be engaged in the consultation process.



# East-West Tie Transmission Project Overview

NextBridge proposes to construct an approximately 400 km, 230 kilovolt, double-circuit AC electrical transmission line extending from the existing Hydro One Networks Inc. (Hydro One) Lakehead Transformer Station in the Municipality of Shuniah near Thunder Bay to the existing Hydro One Wawa Transformer Station near Wawa – with a connection at the Marathon Transformer Station.

The Reference Route generally parallels an existing Hydro One transmission line corridor and has been identified as a potential route for the East-West Tie Project. The Reference Route Alternatives include possible route alternatives to avoid potentially sensitive features.



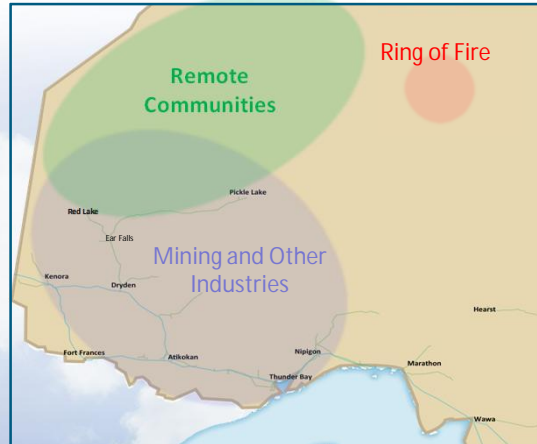
# East-West Tie Transmission Project Overview

- Project would also involve associated support facilities such as new and improved access roads, and laydown areas (temporary storage areas for equipment and supplies).
- Transformer station upgrades to Hydro One Networks Inc.'s infrastructure will be required.
- The new line will be owned and operated by NextBridge Infrastructure.
- The new line, in conjunction with the existing line, is anticipated to provide a total transfer capability of 650 MW into the Northwest, while respecting all applicable reliability standards.
- Targeted in-service date for the new line is the first half of 2018.
- The project requires *Environmental Assessment Act* approval from the Ministry of the Environment and Leave to Construct approval from the Ontario Energy Board.



## The Changing Landscape for Electricity Planning in Ontario's Northwest

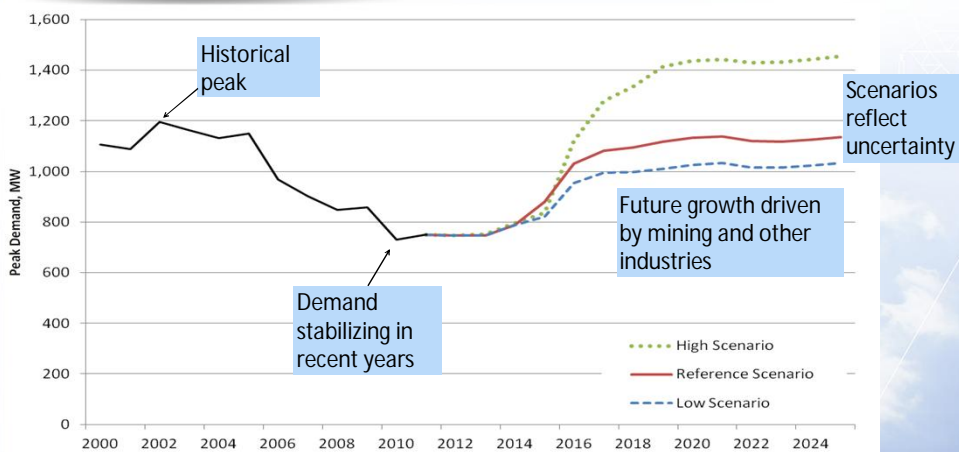
- Stretching from Marathon to Manitoba, and from Minnesota to Hudson Bay, Northwestern Ontario is a vast area with unique characteristics.
- Outlook for strong growth in the mining industry.
- Revitalization of pulp & paper, forestry, and other industrial sectors.
- Connection of remote communities.



Source: Ontario Power Authority

NEXTBIDGE  
INFRASTRUCTURE

## Strong Demand Growth Forecast in the Northwest



At the same time, the region's electricity supply situation is changing.

Source: Ontario Power Authority

NEXTBIDGE  
INFRASTRUCTURE

# Options to Meet the Northwest's Supply Need

Source: Ontario Power Authority

	Transmission	Generation
Provides electricity supply for the Northwest	✓	✓
Provides supply to the rest of Ontario	✓	✓
Cost-effective	✓	
Improves system flexibility	✓	
Allows more efficient use of system	✓	

- The OPA recommends proceeding with transmission: the East-West Tie expansion.
- Additional resources can be committed in step with demand growth as it materializes, and can be utilized more effectively with the expanded Tie.

**NEX**TBRIDGE  
INFRASTRUCTURE

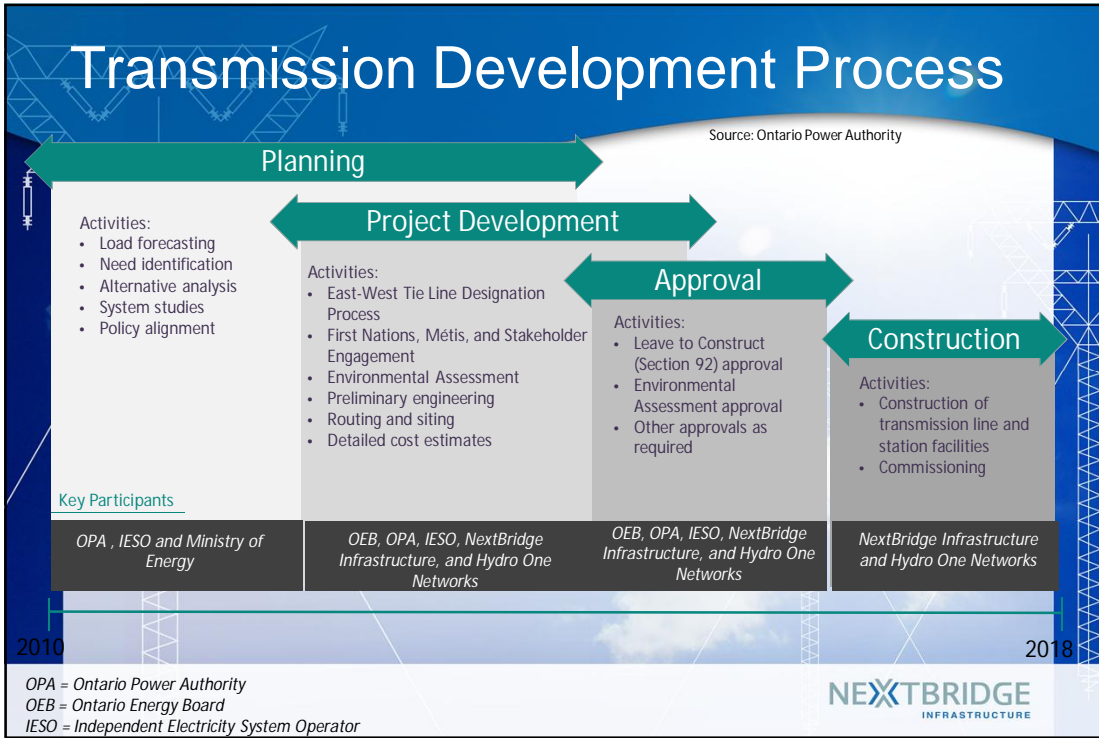
# Scope of the East-West Tie Expansion Project

- The expansion involves building a new double-circuit 230 kV line from Wawa to Thunder Bay (approximately 400 km). It will also connect to the Marathon transformer station.
- Upgrades at the existing Wawa, Marathon and Lakehead transformer stations will also be undertaken.
- The new line, in conjunction with the existing tie, will provide a total transfer capability of 650 MW into the Northwest, while respecting all applicable reliability standards.
- The new line is expected to be completed in early 2018.



Source: Ontario Power Authority

**NEX**TBRIDGE  
INFRASTRUCTURE



## Who is NextBridge?

*Three strong partners in the energy sector*

**NEXTERA ENERGY CANADA**

NextEra Energy Canada is a wholly-owned subsidiary of NextEra Energy, Inc., a leading clean energy company with revenues of more than US\$15.3 billion, more than 41,000 megawatts (MW) of generating capacity, and approximately 15,000 employees in 24 states and Canada. Florida Power & Light Company, another subsidiary of NextEra, serves approximately 4.6 million customer accounts in Florida and is one of the largest rate-regulated electric utilities in the United States.

**ENBRIDGE**

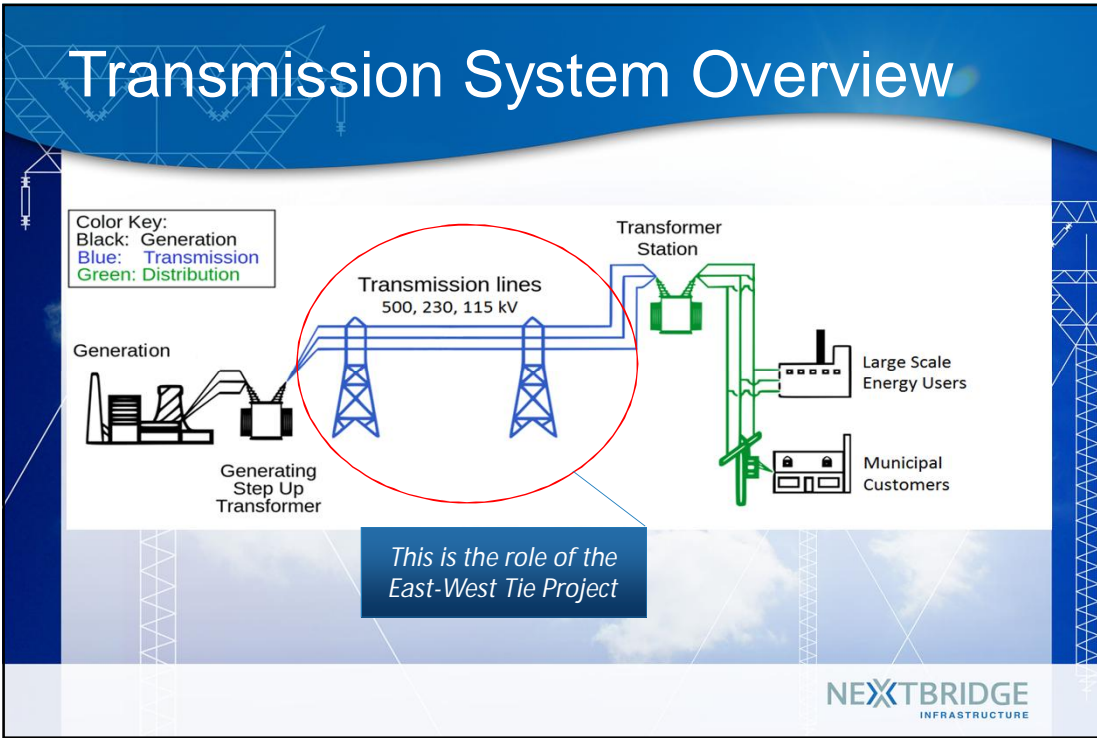
Enbridge Inc. is a North American leader in delivering energy, operating the world's longest crude oil and liquids transportation system, and has almost 1,000 MW of renewable and alternative energy generating capacity. Enbridge Inc. also owns the Montana-Alberta Tie-Line (MATL), a 300 MW, 230 kilovolt (kV) electrical transmission line allowing the movement of power between Alberta and Montana. Enbridge Inc. employs about 10,000 people, primarily in Canada and the U.S. and is ranked as one of Canada's Greenest Employers, and one of the Top 100 Companies to Work for in Canada.

**BOREALIS**  
Infrastructure

Borealis Infrastructure is the infrastructure investment arm of the Ontario Municipal Employees Retirement System (OMERS), one of Canada's largest pension plans with approximately C\$60 billion in net assets. Borealis ranks as one of the world's largest and most respected infrastructure investors with a proven track record in identifying, investing and actively managing large-scale infrastructure investments on behalf of OMERS.

**NEXTBRIDGE**  
INFRASTRUCTURE





# Project Timeline

2010	Ontario Power Authority identifies the project
2011	Minister of Energy asks the Ontario Energy Board to undertake a designation process to select a transmitter to develop the project
2012	Ontario Energy Board asks for bids to develop a new corridor in Ontario's northwest
August 2013	NextBridge selected as the designated transmitter
2013-2014	Terms of Reference for Environmental Assessment
2014-2015	Environmental Assessment
2014-2015	Leave to Construct Application
2016-2017	Construction
2018	In Service

**NEXTBIDGE**  
INFRASTRUCTURE

# Environmental Assessment

An Individual Environmental Assessment (EA) in accordance with the Ontario *Environmental Assessment Act* is required for this Project. An Individual EA is the most rigorous level of EA approval.

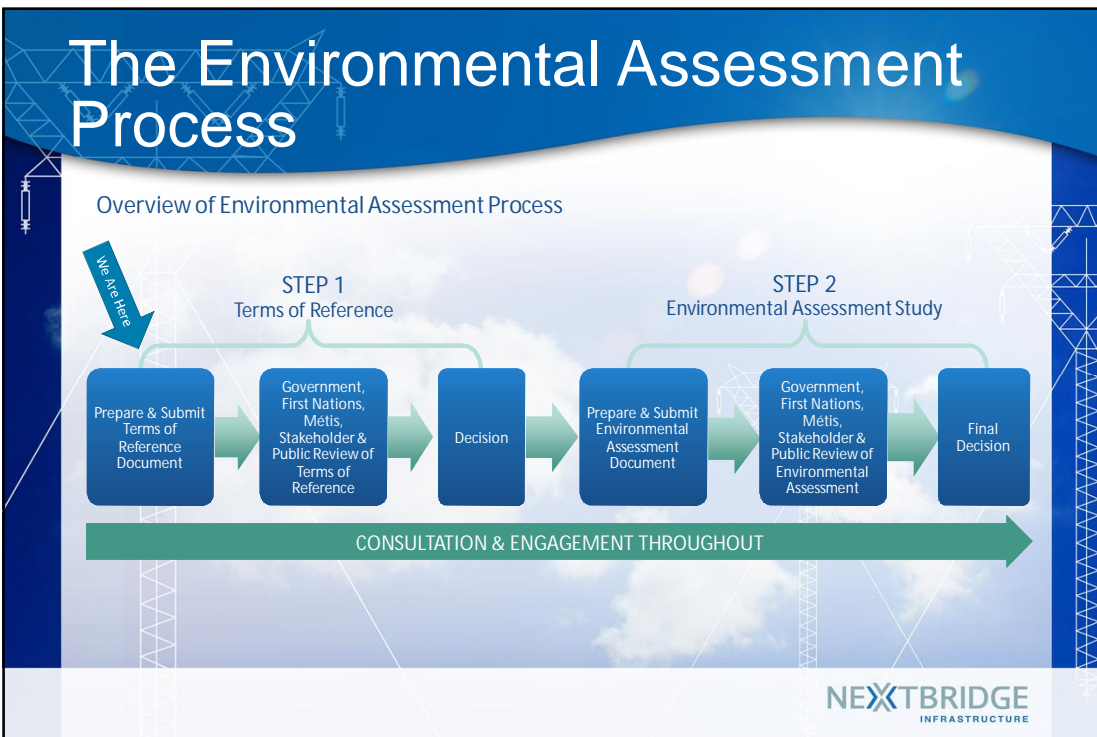
An Environmental Assessment is part of the formal approval process and is used to:

- Predict and minimize or avoid environmental effects before they happen; and
- Incorporate environmental factors and public feedback into project design and decision-making.

An Environmental Assessment includes:

- A description of the project;
- A description of the existing natural, social, economic, and cultural environments (baseline studies);
- First Nations and Métis and stakeholder engagement to discuss and receive input on issues and concerns;
- Consideration of project alternatives, including advantages and disadvantages;
- Identification of possible environmental effects;
- Identification of measures to mitigate and manage identified potential environmental effects; and
- Recommendations for follow-up monitoring.

**NEXBTBRIDGE**  
INFRASTRUCTURE



# Terms of Reference

The first step in the Environmental Assessment process is the preparation of the Terms of Reference. The Terms of Reference is a roadmap for the provincial Environmental Assessment process. It outlines how the Environmental Assessment will be conducted and how the public, First Nations and Métis communities, and government agencies will be involved.

The Terms of Reference will describe:

- Basic project information and rationale for the project;
- Environmental Assessment, regulatory and other permit requirements;
- How the Environmental Assessment will be prepared;
- Purpose of the Environmental Assessment studies and the project;
- Description and rationale for the alternatives selection;
- A brief overview of the environment that the transmission line crosses;
- Engagement plan for the Environmental Assessment; and
- Flexibility to accommodate new circumstances.

The Terms of Reference is subject to approval by the Minister of the Environment. Public, First Nation and Métis and other stakeholder input will be collected during the development of the Terms of Reference. There will be a formal public and agency comment period on the Terms of Reference.

**NEX**TBRIDGE  
INFRASTRUCTURE

# Process for the Terms of Reference

Sep 2013 to Dec 2013	Gather information about the study area
Dec 2013	Hold public Open Houses to obtain feedback on the route and information about the study area as input to the Terms of Reference
Dec 2013 to Jan 2014	Prepare the Terms of Reference
Feb 2014	Terms of Reference submitted to the Minister of the Environment
Spring 2014	Formal public, First Nations and Métis, and agency review of the Terms of Reference
Mid-2014	Ministry of the Environment approval decision on the Terms of Reference

**NEX**TBRIDGE  
INFRASTRUCTURE

# What's in the Terms of Reference:


*A Description of the Proposed Project*

### ROUTING

- The Terms of Reference will describe the general characteristics of the Reference Route and alternative routes.
- NextBridge is looking at alternatives to the Reference Route in three areas (Pukaskwa National Park and two First Nations communities).
- Local refinements to the Reference Route may be identified to avoid potentially sensitive natural features.
- Public, stakeholder, agency and First Nations and Métis input will be sought out to help determine a preferred route in the areas where alternatives have been identified.

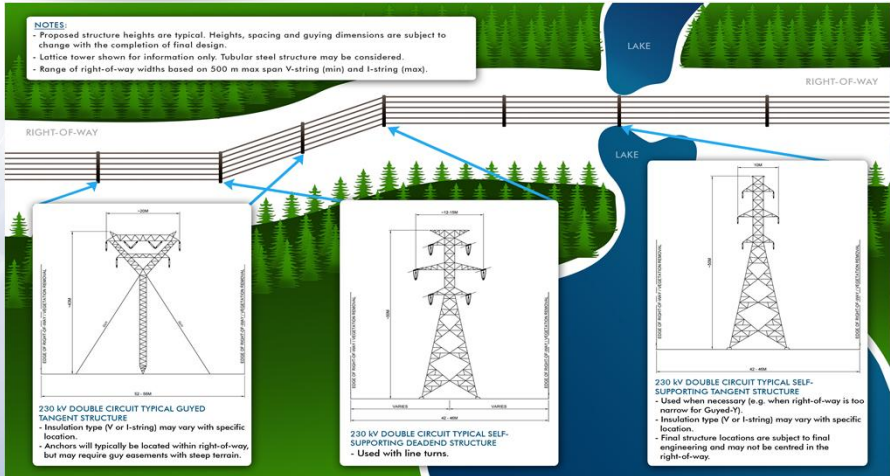
### RIGHT-OF-WAY AND TOWERS

- A new right-of-way approximately 56 metres wide will be required.
- Structures will generally be centred in the new right of way and spaced approximately 400 metres apart.
- Generally tower structures may be “guyed-Y lattice structures”. Self-supporting “tangent” and self-supporting “dead-end structures” may also be used.
- Public, stakeholder, agency and First Nations and Métis input will be sought on tower locations and structure types.



# What's in the Terms of Reference:

*A Description of the Proposed Project*



**NOTES:**

- Proposed structure heights are typical. Heights, spacing and guying dimensions are subject to change with the completion of final design.
- Lattice tower shown for information only. Tubular steel structure may be considered.
- Range of right-of-way widths based on 500 m max span V-string (min) and I-string (max).

**230 kV DOUBLE CIRCUIT TYPICAL GUYED TANGENT STRUCTURE**


- Insulation type (V or I-string) may vary with specific location.
- Anchors will typically be located within right-of-way, but may require guy assessments with steep terrain.

**230 kV DOUBLE CIRCUIT TYPICAL SELF-SUPPORTING DEAD-END STRUCTURE**

- Used with line turns.

**230 kV DOUBLE CIRCUIT TYPICAL SELF-SUPPORTING TANGENT STRUCTURE**

- Used when necessary (e.g. when right-of-way is too narrow for Guyed).
- Insulation type (V or I-string) may vary with specific location.
- Final structure locations are subject to final engineering and may not be centred in the right-of-way.



## What's in the Terms of Reference: *Route Selection Decision Process*

For the areas where alternative routes have been identified a preferred route needs to be selected. Decision-making under the *Environmental Assessment Act* must consider all aspects of the environment – natural, social, cultural and economic.

Criteria will be developed to help guide the selection of a preferred alternative.

Criteria will include, but will not be limited to, Species at Risk habitat, lakes and wetlands that cannot be spanned, private residences, hunt camps, and trap line cabins.

What do you think NextBridge should consider when making decisions on which route to use for the new East-West Tie?  
Please fill out a comment form and let us know

**NEXTBIDGE**  
INFRASTRUCTURE

## What's in the Terms of Reference: *An Outline of Studies to be Completed*

The Terms of Reference will identify information to be collected during the Environmental Assessment. We plan to collect the following information by looking at background documents, speaking with First Nations and Métis communities, agency representatives and others and doing field work:

<u>NATURAL ENVIRONMENT</u>	<u>SOCIAL, ECONOMIC AND CULTURAL ENVIRONMENT</u>
<ul style="list-style-type: none"> <li>• Fish and fish habitat;</li> <li>• Forest resources;</li> <li>• Significant valley lands;</li> <li>• Significant wetlands;</li> <li>• Species at Risk (e.g. Woodland Caribou);</li> <li>• Water bodies; and</li> <li>• Wildlife areas.</li> </ul>	<ul style="list-style-type: none"> <li>• Agriculture;</li> <li>• Archaeology and heritage;</li> <li>• Commercial activities (business activities close to right of way);</li> <li>• Effect on properties;</li> <li>• Land Use;</li> <li>• Landscape and visual assessment (scenic views, aesthetics);</li> <li>• Mineral and aggregate resources (pits and quarries);</li> <li>• Recreational facilities (parks, trails);</li> <li>• Social infrastructure and hard infrastructure; and</li> <li>• Traditional First Nation and Métis knowledge.</li> </ul>

This list of information may be refined as further input is received.

Information collected for the Reference Route and alternative routes (generally 500 metres on either side of the line route) will be mapped and used to:

- Characterize the area;
- Determine the potential impact of the project on the natural, social, economic, and cultural environments; and,
- Identify appropriate methods to minimize impact.

**NEXTBIDGE**  
INFRASTRUCTURE

# Leave to Construct Approval

Leave to Construct Approval (Section 92 of the *Ontario Energy Board Act, 1998*)

In order to build the new East-West Tie, NextBridge must file a "Leave to Construct" application with the Ontario Energy Board.

When the Ontario Energy Board receives a Leave to Construct application, it reviews the material, makes the information public and provides an opportunity for any interested parties, including First Nations and Métis communities, to provide input.

In carrying out its mandate, the Ontario Energy Board considers the impacts that the project may have upon consumers with respect to prices, as well as matters that concern the reliability and quality of electricity service. The Ontario Energy Board will approve projects they consider to be in the public interest.

NextBridge is currently contacting landowners to arrange for access to property for field and legal surveys.

**NEXTBRIDGE**  
INFRASTRUCTURE

# NextBridge Infrastructure's Engagement Commitment

## COMMUNITY RELATIONS

NextBridge will engage stakeholders in any project it develops through honest, regular and open communication, seeking and respecting each party's input. We are committed to timely and meaningful dialogue with stakeholders, including governments, regulators, landowners, and interested members of the public, and believe that this input will be critical to a successful project that seeks to address the needs of those involved.

## FIRST NATIONS AND MÉTIS RELATIONS

NextBridge Infrastructure considers the participation of First Nations and Métis communities to be an essential component of successful transmission projects in Northern Ontario. NextBridge is committed to working with First Nations and Métis communities in Ontario to provide sustainable benefits to those communities.



**NEXTBRIDGE**  
INFRASTRUCTURE

# Consultation and Engagement

- NextBridge recognizes the importance of meaningful and respectful Stakeholder, First Nations and Métis engagement.
- We encourage participation at every step of this project.

During development of the Terms of Reference NextBridge has to date:

- Notified landowners along the Reference Route and alternatives and established contact;
- Developed a project contact list and notified elected officials, municipal staff, agencies and other key stakeholders;
- Placed ads in the local newspapers;
- Initiated discussions with First Nations and Métis;
- Held Open Houses;
- Prepared and distributed notices and newsletters; and
- Established a website and toll-free project hotline.



# Consultation and Engagement Activities

Terms of Reference	Environmental Assessment
<ul style="list-style-type: none"> <li>• Municipal, agency &amp; key stakeholder meetings</li> <li>• Landowner contact by land agents</li> <li>• First Nations &amp; Métis meetings</li> <li>• Notice of Commencement and Notice of Open Houses</li> <li>• Newsletter #1</li> <li>• Project hotline: 1-888-767-3006</li> <li>• Project website: <a href="http://www.nextbridge.ca">www.nextbridge.ca</a></li> <li>• Open House round one – project introduction and the Terms of Reference</li> <li>• Draft Terms of Reference 30-day comment period</li> <li>• Notice of Submission of Terms of Reference to Ministry of the Environment</li> <li>• Minimum 30-day public comment period on submitted Terms of Reference</li> <li>• Notification of Minister's decision</li> </ul>	<ul style="list-style-type: none"> <li>• Notice of Commencement of Environmental Assessment</li> <li>• Notice of Open Houses</li> <li>• Continuation of municipal, key stakeholder, First Nations and Métis, agency, and landowner meetings</li> <li>• Project hotline: 1-888-767-3006</li> <li>• Project website: <a href="http://www.nextbridge.ca">www.nextbridge.ca</a></li> <li>• Additional newsletters</li> <li>• Open House round two – alternative route evaluation and proposed mitigation measures</li> <li>• Open House round three – Draft Environmental Assessment</li> <li>• Draft Environmental Assessment 30-day comment period</li> <li>• Notice of Submission of Environmental Assessment to Ministry of the Environment</li> <li>• Minimum seven-week public comment period on submitted Environmental Assessment</li> <li>• Posting of Ministry review of Environmental Assessment</li> <li>• Notification of Minister's decision</li> </ul>

NextBridge is available to respond to questions and discuss the project with interested parties throughout the Terms of Reference and Environmental Assessment process



# Electric and Magnetic Fields

- Electromagnetic Fields (EMFs; also called electric and magnetic fields) are invisible forces that surround electrical equipment, power cords, and power lines. You cannot see or feel EMFs.
- Every time you use electricity and electrical appliances, you are exposed to EMFs at extremely low frequencies (ELF). EMFs produced by both power lines and use of electrical appliances belong to this category.
- The levels of EMF drop off rapidly with distance from source.

## HEALTH CANADA'S POSITION ON EMFS

There is no compelling scientific evidence that EMFs in living and school environments, regardless of distance from transmission lines, cause ill health such as cancer.

Health Canada (2012) states:

*"When you are inside your home, the magnetic fields from high voltage power lines and transformer boxes are often weaker than those from household electrical appliances".*

Based on the available weight of evidence, Health Canada *"does not consider that any precautionary measures are needed regarding daily exposures to EMFs at ELFs. There is no conclusive evidence of any harm caused by exposures at levels found in Canadian homes and schools, including those located just outside the boundaries of power line corridors".*

**NEXTBRIDGE**  
INFRASTRUCTURE

# Thank You!

On behalf of the project team,  
thank you for attending this Open House.

Please remember to fill out a comment form before you go.

Input is always welcome:

Your input is important to us. If you have any questions or concerns, or if you require further information regarding this project, please contact:

Oliver Romaniuk, Project Manager  
NextBridge Infrastructure  
Email: [info@nextbridge.ca](mailto:info@nextbridge.ca)  
Project Hotline: 1-888-767-3006

Be sure to visit the project website for updates:  
[www.nextbridge.ca](http://www.nextbridge.ca)

**NEXTBRIDGE**  
INFRASTRUCTURE